

**Bedfordshire, Luton and Milton Keynes Area Prescribing Committee  
(BLMK APC)**

---

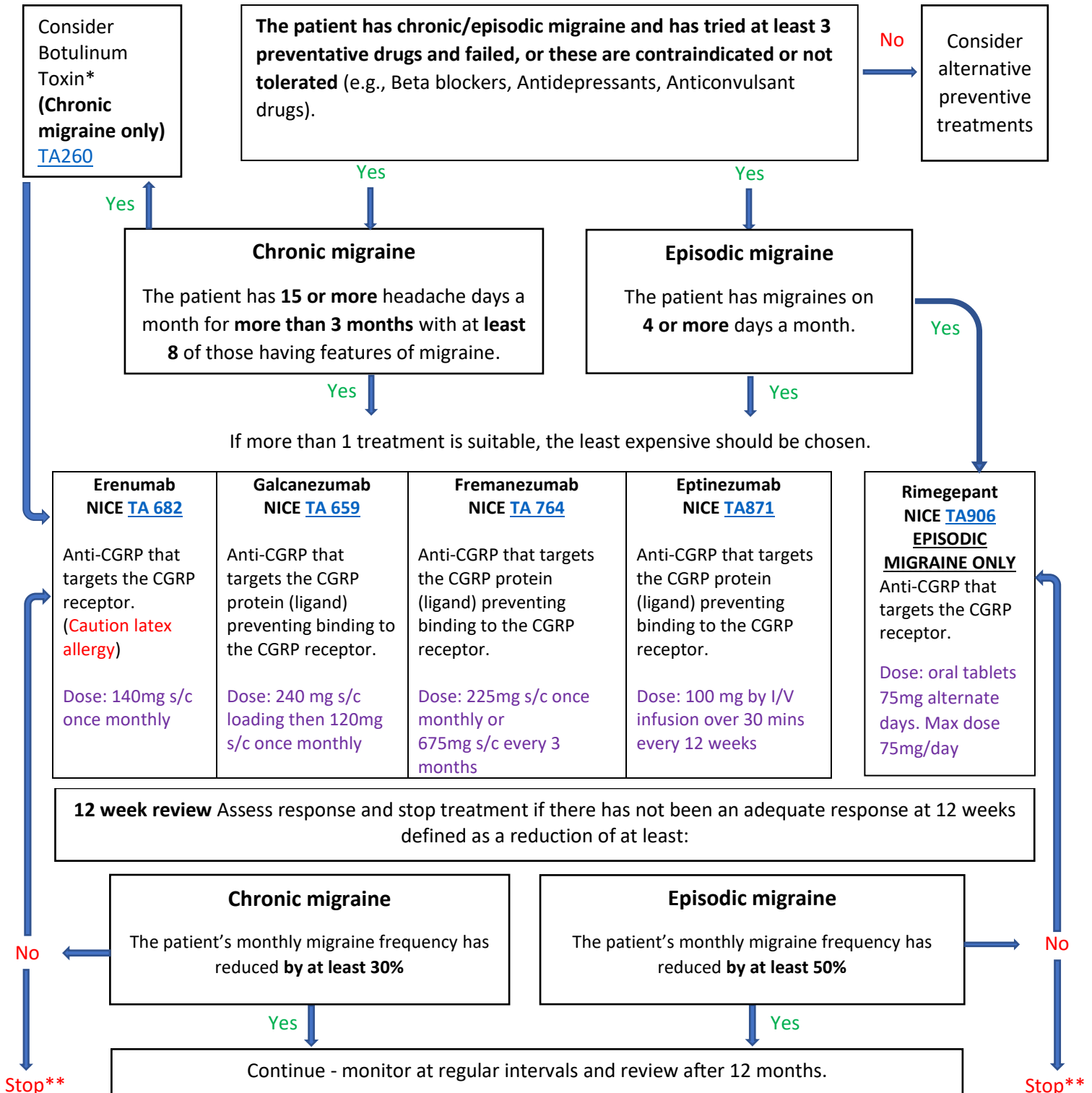
**Migraine prevention pathway in adults after  
failure of standard first line treatments**

**Updated September 2023**

(Previous version approved at BLMK APC May 2023)

The following organisations contribute to and participate in the BLMK APC – Bedfordshire, Luton and Milton Keynes ICB; Bedfordshire Hospitals NHS Foundation Trust; Cambridgeshire Community Services NHS Trust; Central and North West London NHS Foundation Trust; East London NHS Foundation Trust; Milton Keynes University Hospital NHS Foundation Trust

## Migraine Prevention Pathway in Adults



\* Optional treatment with Botulinum Toxin can be considered before/instead of Anti-CGRPs. Concurrent treatment with Botulinum Toxin and Anti-CGRPs is not commissioned.

\*\*2 lines of Anti-CGRP therapy are routinely commissioned if second line treatment has an alternative mode of action.

Treatment requests beyond the end of the pathway, where clinical exceptionalty can be demonstrated, can be considered via the [Individual Funding Request \(IFR\) route](#)