



Luton Diabetes Specialist Pharmacists - Overview for Practices

SUMMARY

<p>INTRODUCTION</p>	<ul style="list-style-type: none"> • The Luton diabetes specialist pharmacists within CCG MOT team support the management of glycaemia and cardiometabolic risk factors (blood pressure and lipids) in adults with type 2 diabetes in Luton. They also help practices to optimise QOF achievement • They support data-driven, proactive identification and review of patients at highest risk and with greatest clinical need • They are prescribers and have skills to initiate injectables such as GLP1 and insulin • They work closely with the community integrated diabetes team and consultants at the L&D to manage patients with complexity – with a weekly MDT meeting
<p>WHO TO ESCALATE FOR REVIEW</p>	<p>Anyone who you were considering referring to the Community Diabetes Service or to the hospital for pharmacological management (i.e. do not send DESMOND referrals to the team). In particular, consider escalating complex patients with uncontrolled glycaemia despite multiple oral agents.</p>
<p>HOW TO ESCALATE</p>	<p>There is a single point of access - lutonccg.diabetespharmacist@nhs.net</p> <p>Send an email with following information: 1.) Patient name, 2.) NHS number, 3.) GP practice, 4.) Reason for escalation / request for discussion.</p>
<p>HELP US HELP YOU</p>	<ul style="list-style-type: none"> • Diabetes specialist pharmacists are a limited resource and we appreciate your support in escalating appropriate patients. We are in the process of recruiting additional capacity • In those practices where the pharmacists are currently running clinic sessions, the same applies. Please do not book simple / non-complex reviews as these should be managed by the practice clinical team • Please feel free to join the Tuesday am MDT (with hospital consultants joining fortnightly) – it is an excellent opportunity to discuss any complex patients and to learn from each other – let us know if you're interested! If you have practice clinicians with an interest in learning more about diabetes management, please ask us about the CDEP course available

MEET THE TEAM (recently shortlisted for HSJ awards)

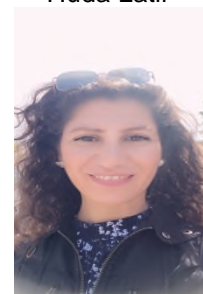
Moji Adebajo



Mani Anand



Huda Latif



Supporting Multidisciplinary Diabetes Care in Luton

The diabetes specialist pharmacists directly support General Practice and are available to receive requests for escalations of care for people who would otherwise be referred to specialist services.

They meet weekly at an MDT with community service and hospital representation to discuss complex cases, providing quick access to other specialist input. They also support the 'stepdown' of patients from hospital services to General Practice to enhance safety and appropriate follow-up



To escalate the care of a patient to the Diabetes Specialist Pharmacist, or to request discussion at the weekly MDT, please email lutonccg.diabetespharmacist@nhs.net with:
1.) Patient name, 2.) NHS number, 3.) GP practice, 4.) Reason for escalation / request for discussion